

**7EP**

**Ordering Code**

7EP - 22 - 28 - A4 - 10

1      2      3      4      5

**1** Energy Saving Inverter Hydraulic Unit

**2** Motor Power

- 15 : 1.5 kW      • 22 : 2.2 kW

**3** No-load Discharge Capacity

- 14: 14L/min      • 28 : 28L/min

**4** Pressure Range

- A2 : 1.5~3.5MPa   • A3 : 3.0~5.5MPa   • A4 : 5.0~7.0MPa

**5** Design Version



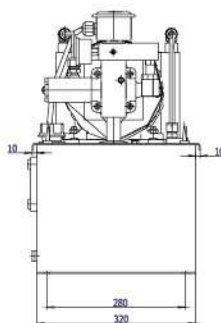
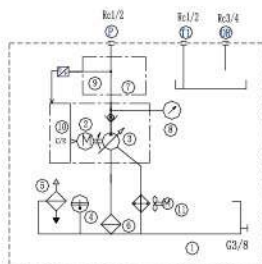
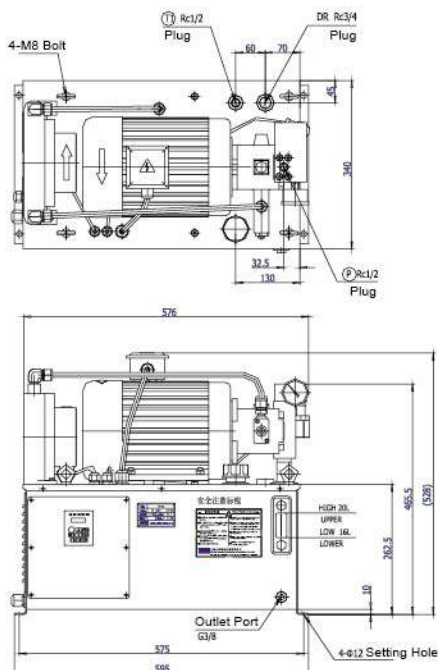
**Specifications**

Model	Motor Power (KW)	Tank Capacity (L)	Max Pressure (Mpa)	Max Fow (L/min)	Current Rating(A) 220V/ 50 HZ (3 Phase)	Weight (Kg)
7EP-15-14-***	1.5 kW	10	7	14	6.5	50
7EP-22-28-***	2.2 kW	20		28	8.7	65

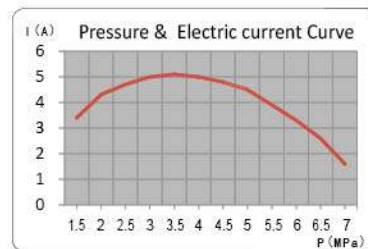
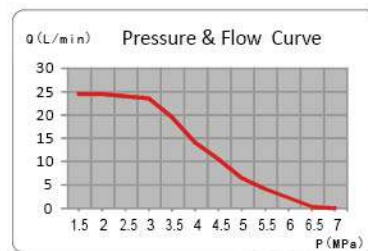
**Model List**

7EP-22-28-A4-10

GRAPHIC SYMBOLS

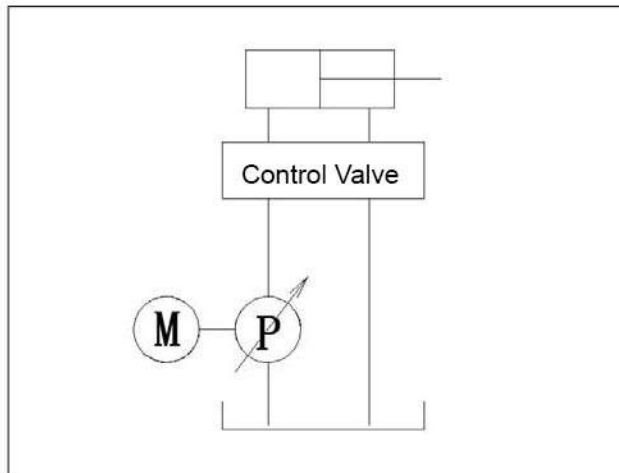


**Performance**

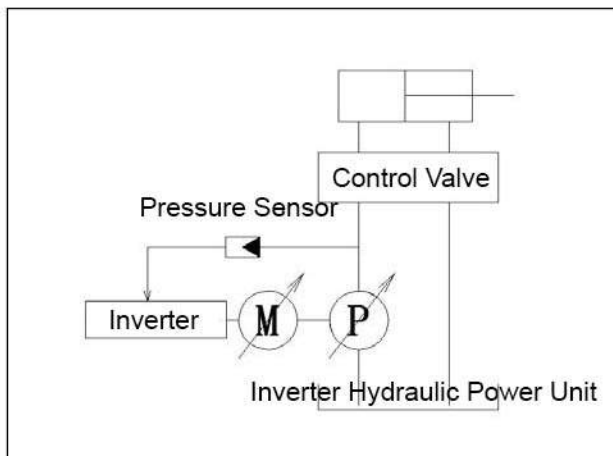
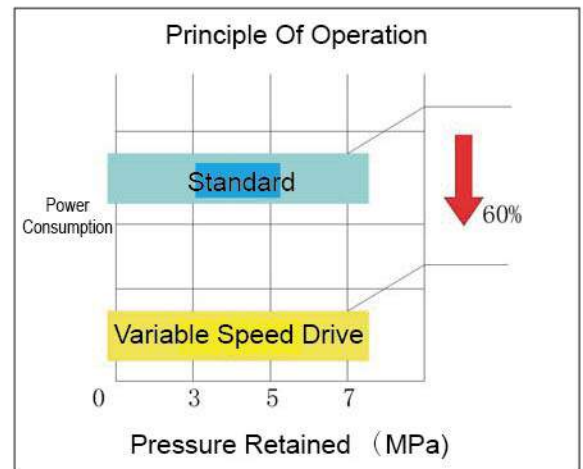


- 1. Tank
- 2. Inverter Motor
- 3. Variable vane pump
- 4. Level gauge
- 5. Oil filter
- 6. Filter
- 7. Manifold
- 8. Pressure gauge
- 9. Pressure Sensor
- 10. Inverter
- 11. Cooler

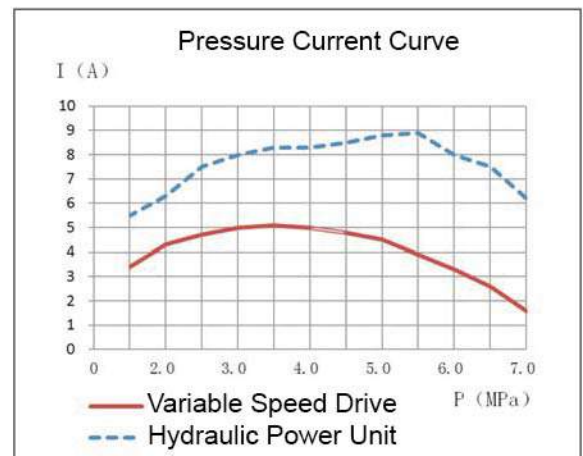
**Function**



Hydraulic Power Unit



Inverter Hydraulic Power Unit



**Characteristics**

1. Easy Operation:

- ① Easy to be connected to commercial power sources.
- ② Touch panel for clearly display and easy setting for pressure and flow rate.

2. Energy Saving, automatic pressure-flow control.

- ① Consistent flow by the fixed control of pressure.
- ② Minimize the motor operation by the pressure control and saves energy up to 60%.

3. Low Noise, Low Temperature

- ① The inverter motor reduces energy by using low speed and causes low noise (15db).
- ② The oil temperature can be kept at +2°C above the room temperature by keeping the constant pressure (6MPa).