

Features

- **Enhanced energy-saving**
With the application of IE3 standard high-efficient motor, new-design of vane pump and special connection on 7SP series miniature motor pump, 7SP series can save 20% more energy than other motor pumps.
- **Space-saving**
The integrated design of the pump system and its compact layout reduce space required for the system.
- **Easy maintenance**
Special connection between motor and pump cause less wear-out on keys. The simple structure of the pump system makes maintenance much easier.
- **High efficiency, low temperature**
The high efficiency, low temperature motor together with the low leakage of vane pump provide more accuracy for the miniature pump system while holding required output pressure.



Ordering Code

7SP - 10 - 1.5 - 1 - A2 - 10

1
2
3
4
5
6

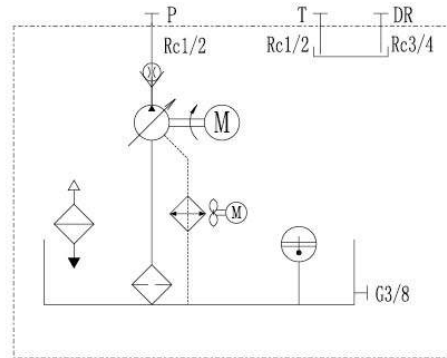
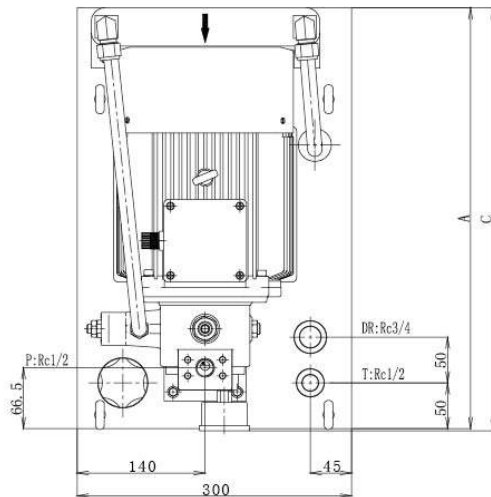
1	Compact Hydraulic Unit
2	Tank capacity
<ul style="list-style-type: none"> • 10: 10L • 20: 20L 	
3	Motor Power
<ul style="list-style-type: none"> • 0.7: 0.75 kW • 1.5: 1.5 kW • 2.2: 2.2 kW 	
4	Max Flow (1800 rpm)
<ul style="list-style-type: none"> • 0: 14.5 L/min • 1: 29 L/min 	
5	Pressure Range
<ul style="list-style-type: none"> • A1: 1.5~4 MPa • A2: 3.5~6 MPa • A3: 5.5~8 MPa 	
6	Design Version

Specifications

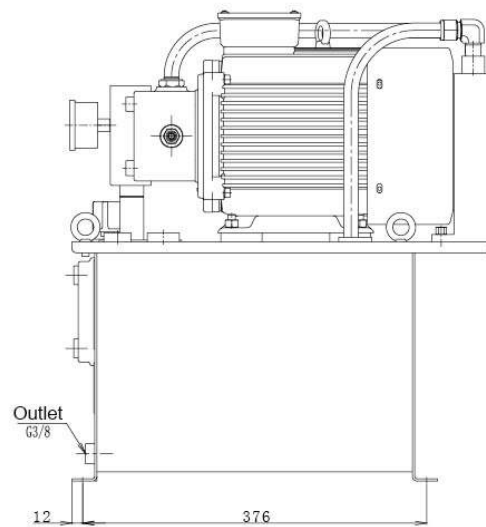
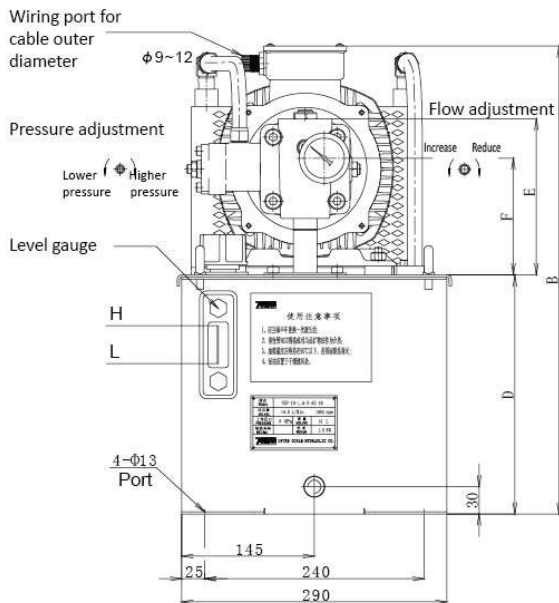
Model	Tank Capacity (L)	Motor Power (KW)	Max Flow (L/min)	Max Pressure (Mpa)	Mounting Dimensions(mm)
7SP-***-0*-10	10/20	0.75/1.5	14.5	8	300x430/465
7SP-***-1*-10	10/20	1.5/2.2	29	8	300x430/465

7SP- 10 / 20

Model List



Note :
1. Confirm the bolt is fastening on the power unit.
2. DR port must be closed.



Model	Dimensions (mm)					
	A	B	C	D	E	F
7SP-10-1.5-*-*-10	425	400	427.5	160	170.5	117.5
7SP-20-2.2-*-*-10	460	511.5	462.5	261.5	170.5	127.5