

CONTROL VALVE

FEATURES :

- The inching valve could smooth the control of transmitter.
- The pressure accumulator could reduce the vibration and improve the movement of transmitter.
- Control valve is developed for the gear-box.
- Applied to engineering trucks with good control of the forward, backward and pausing movements.

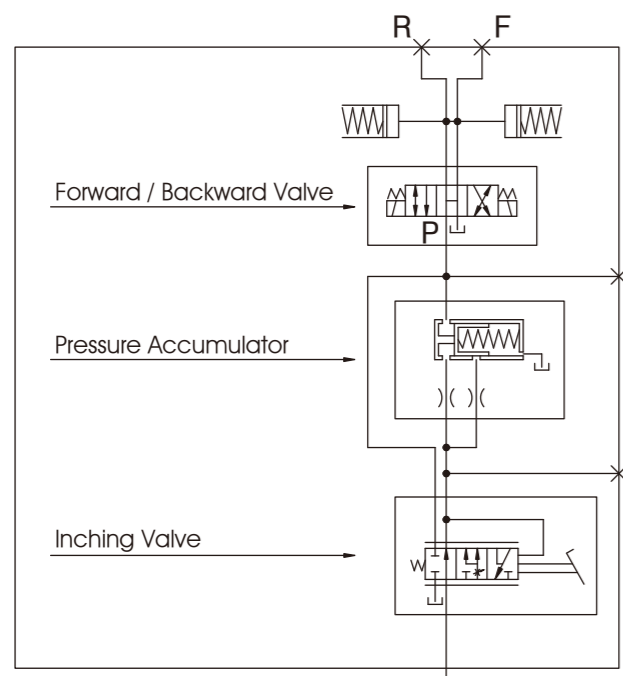


Model: FD20AE

SPECIFICATION :

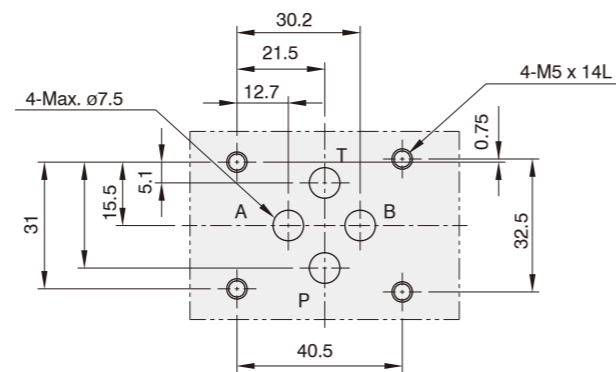
Max. Flow Rate	48 L/Min
Max Operating Pressure	11~13 Bar
Power Source	DC12 & DC24
Direction	Forward / Backward
Extra Subplate	

GRAPHIC SYMBOLS :



INSTALLATION DIMENSIONS:

Mounting Surface: ISO 4401-AB-03-4-A



CONTROL VALVE

DIMENSIONS :

