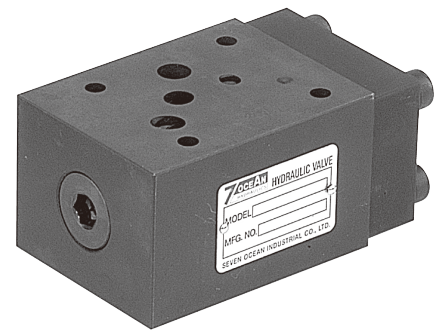


PILOT OPERATED CHECK VALVE

FEATURES :

- This valve is applied between balance valve & manifold, can prevent unexpected electricity discharge.

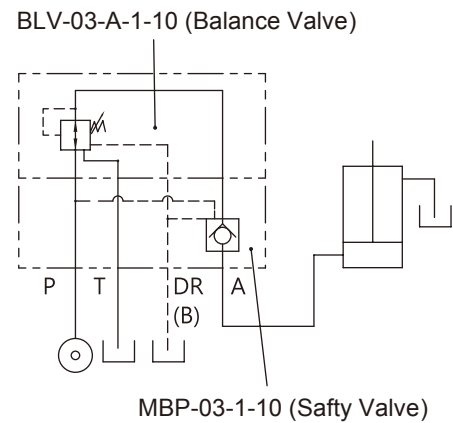


Model: MBP-03-1-10

SPECIFICATION :

Model	MBP-03
Maximum Flow Rate	50 L/Min
Maximum Operating Pressure	210 Bar (3000 PSI)
Check Valve Cracking Pressure	1: 0.4 Bar
	2: 3.5 Bar
Ambient Temperature Range	-20°C ~ +50°C
Hydraulic Fluid Temperature	-20°C ~ +70°C
Viscosity Range	15~400 mm ² /S
Hydraulic Oil	ISO VG32, 46, 68
Fluid Cleanliness	25 μm
Mounting Pattern	ISO 4401-AC-05-4-A
Screws	M8 x 85 L (4 pcs)
Weight (Valve with hydraulic operation)	2.7 kg

HYDRAULIC CONFIGURATION:



MBP-03-1-10 (Safety Valve)

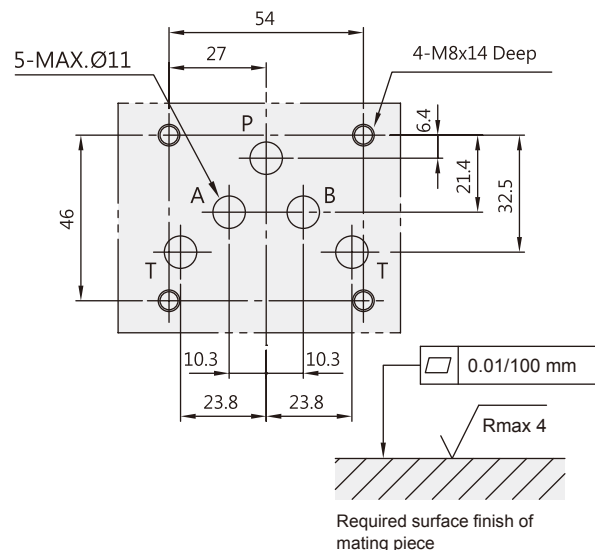
ORDERING CODE :

M BP - 03 - 1 - E - 10

1 **2** **3** **4** **5** **6**

- 1** MODULAR TYPE
- 2** PILOT OPERATED CHECK VALVE FOR BALANCE VALVE
- 3** NOMINAL VALVE SIZE NG10
- 4** CHECK VALVE CRACKING PRESSURE
1: 0.4 Bar 2: 3.5 Bar
- 5** DRAIN
None: Internal pilot, external drain
E: External pilot, external drain
- 6** DESIGN NUMBER

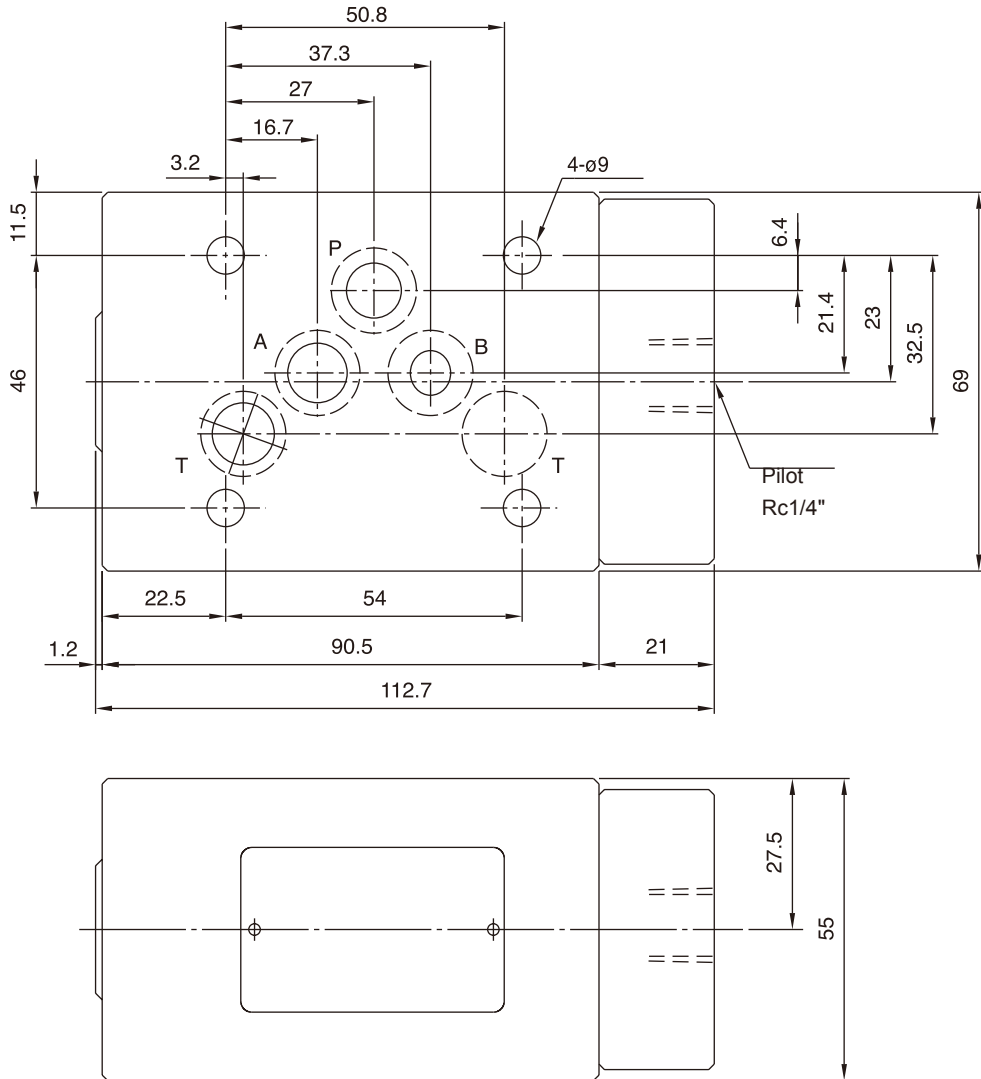
INSTALLATION DIMENSIONS:



PILOT OPERATED CHECK VALVE

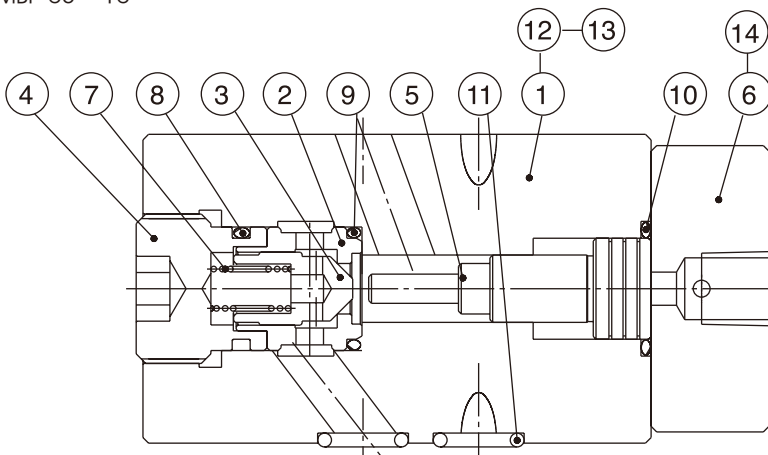
DIMENSION:

■ MBP-03-*-10



CROSS SECTION DRAWING :

■ MBP-03-*-10



- | | |
|---------------|---------------|
| 1. Valve Body | 8. O Ring |
| 2. Valve Base | 9. O Ring |
| 3. Piston | 10. O Ring |
| 4. Nut | 11. O Ring |
| 5. Push Rod | 12. Nameplate |
| 6. Side Cover | 13. Rivet |
| 7. Spring | 14. Screw |