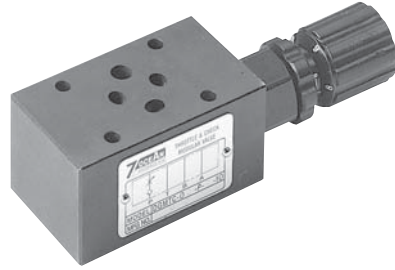


FLOW REGULATOR WITH CHECK VALVE

SANDWICH PLATE DESIGN MTC02 SIZE 6

FEATURES :

- Highest performance in NG 6
- Sandwich plate design
- For limiting the main or pilot fluid flow of 2 actuator connections
- For meter-in or meter-out control
- Connections to DIN, ISO and CETOP



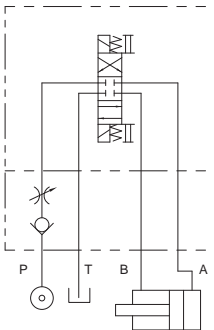
Model: MTC-02-P-10

SPECIFICATION :

Maximum Flow Rate	50 l/Min (13.2 GPM)
Maximum working pressure	320 Bar (4570 PSI)
Check valve cracking pressure	0.4 Bar (5.7 PSI)
Ambient Temperature Range	-20°C ~ +50°C
Hydraulic Fluid Temperature Range	-20°C ~ +70°C
Viscosity Range	15~400 mm ² /S
Hydraulic Oil	ISO VG32, 46, 68
Fluid Cleanliness	25 μm
Mounting Pattern	ISO 4401-AB-03-4-A
Weight	1.0 kg

HYDRAULIC CONFIGURATION:

- MTC-02-P-10



FLOW REGULATOR WITH CHECK VALVE

SANDWICH PLATE DESIGN MTCO2 SIZE 6

ORDERING CODE :

M TC - 02 - P - 10 - **

1 2 3 4 5 6

1 SANDWICH PLATE DESIGN

2 FLOW REGULATOR WITH CHECK VALVE

3 NOMINAL VALVE SIZE:

NG 6, CETOP 3 and ISO 4401-03 (NFPA-D03/DIN 24340)

4 CONFIGURATION

P: single, acting on port P

5 DESIGN NUMBER

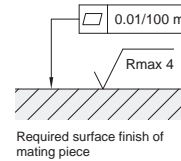
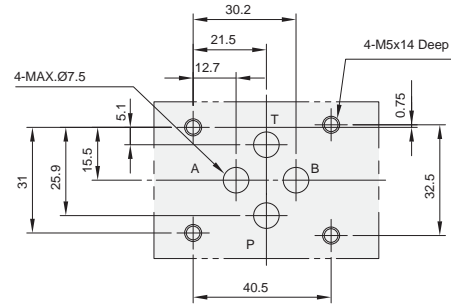
10: with handle

20: without handle

6 OPTIONAL INQUIRY

INSTALLATION DIMENSIONS:

(Machined valve mounting face with position of ports)

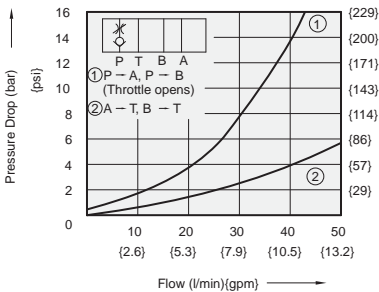


PERFORMANCE CURVES:

Viscosity of Hydraulic Fluid: 32 mm²/s

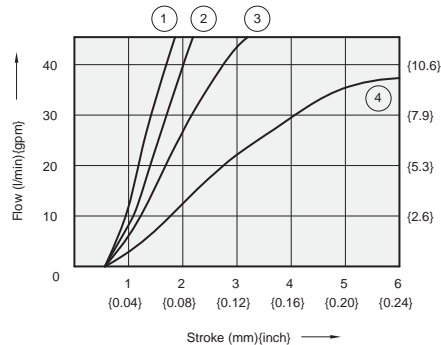
Pressure Drop Characteristic

■ MTC-02-P-10



Stroke Versus Flow Diagram

■ MTC-02-P-10



- ① Pressure Difference = 140 bar {2000psi} ③ Pressure Difference = 35 bar {500psi}
 ② Pressure Difference = 70 bar {1000psi} ④ Pressure Difference = 10 bar {143psi}

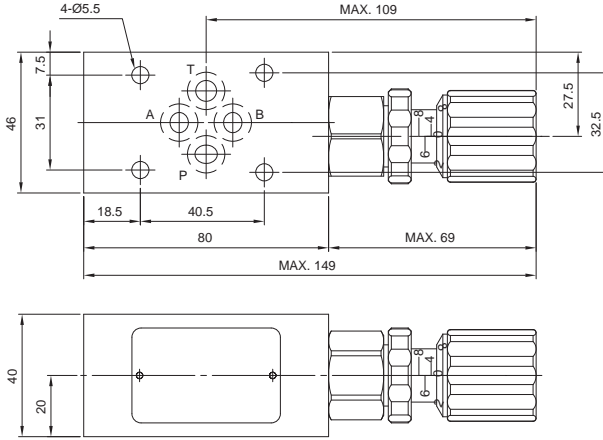
FLOW REGULATOR WITH CHECK VALVE

SANDWICH PLATE DESIGN MTC02 SIZE 6

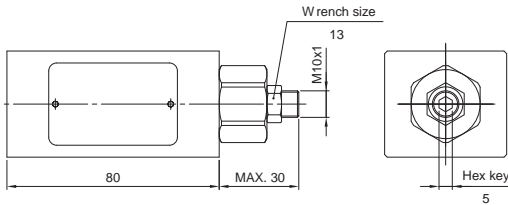
DIMENSIONS :

■ MTC-02-P-10

3rd angle
projection

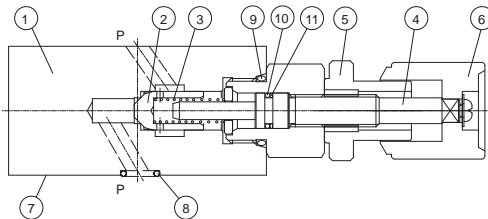


■ MTC-02-P-20



CROSS SECTION DRAWING :

■ MTC-02-P-10



- | | |
|--|--|
| 1. Body | 8. O-ring 1B-P9
for ports A,B,P and T |
| 2. Throttle | 9. O-ring 1B-P18 |
| 3. Spring | 10. O-ring 1A-P8 |
| 4. Setting screw | 11. O-ring BU-P8 |
| 5. Locking nut | |
| 6. Adjustment element | |
| 7. Connections to DIN 24340 from A6;
valve fixing screws M5x85 DIN 912-10,9
tightening torque 8~9 Nm | |